

Figure 1A. Solid Waste Can / Glass Shredder Assembly

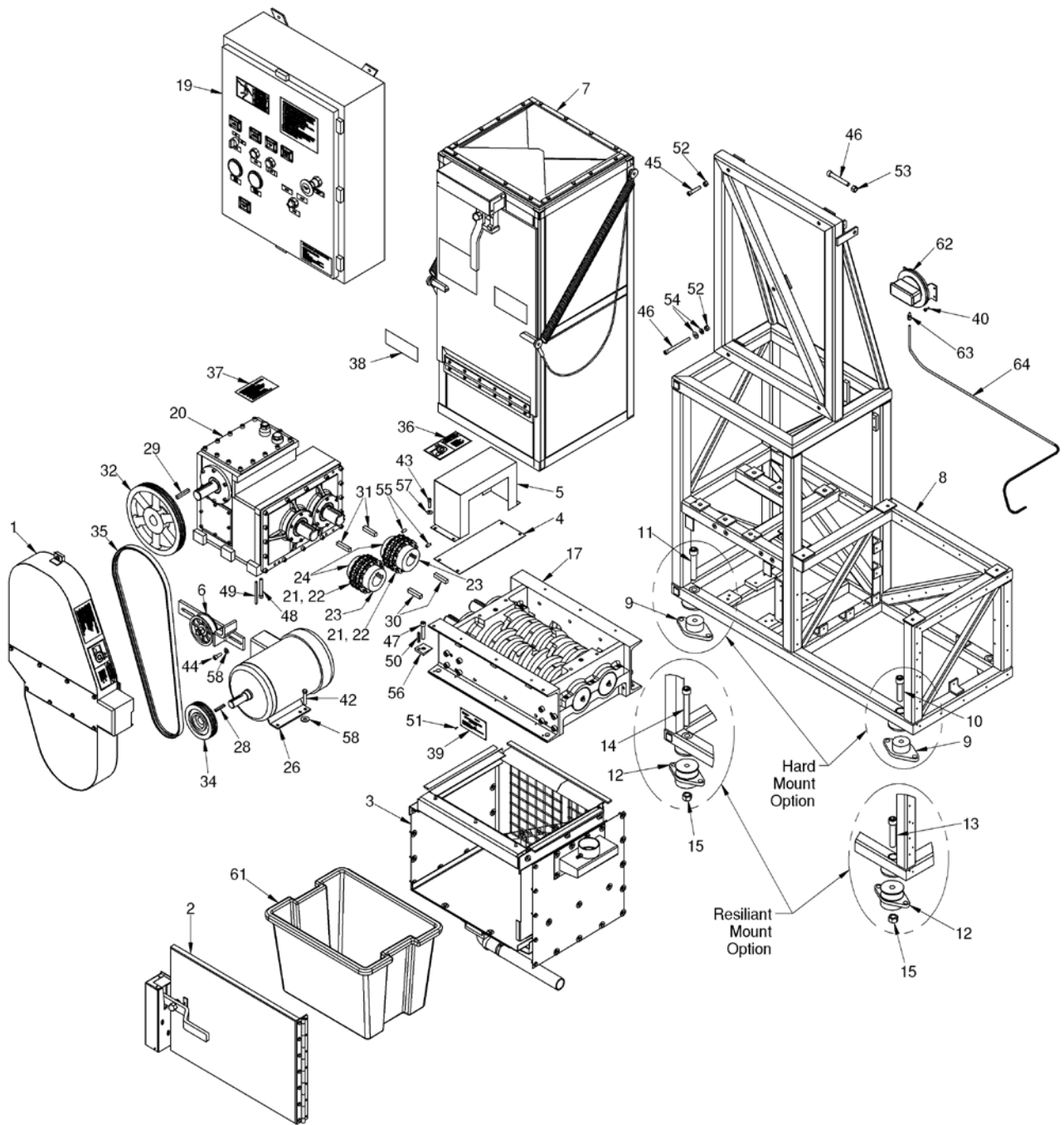


Figure 1B. Solid Waste Mod 1 Plastics Shredder Assembly

Solid Waste Can / Glass Shredder & Solid Waste Mod. I Plastics Shredder Assemblies

FIG. NO.	INDEX NO.	PART NUMBER	INDENT	DESCRIPTION	QTY PER ASSY
1A	0	AJXXXXN6960881AY099	1	PWP CAN / GLASS SHREDDER ASSEMBLY	
1B	0	AJXXXXN7556873AY099	1	PWP MOD 1 PLASTIC SHREDDER ASSEMBLY	
1A & 1B	1	AJXXXXN6960898AY099	2	BELT GUARD ASSEMBLY	1
1A & 1B	2	AJXXXXN6960887AY098	2	COLLECTION AREA DOOR ASSEMBLY	1
1A & 1B	3	AJXXXXN6960929AY099	2	COLLECTION AREA ENCLOSURE	1
1A & 1B	4	AJXXXXN6960903PC002	2	BOTTOM COUPLING GUARD	1
1A & 1B	5	AJXXXXN6960903PC001	2	TOP COUPLING GUARD	1
1A & 1B	6	AJXXXXN6960894AY099	2	DRIVE BELT TENSIONER	1
1A & 1B	7	AJXXXXN6960928AY099	2	FEED HOPPER ASSEMBLY	1
1A & 1B	8	AJXXXXN6960885AY099	2	FRAME ASSEMBLY	1
1A & 1B	9	AJXXXXN6960885AY098	2	HARD MOUNT ASSEMBLY	4
1A & 1B	10	AJXXXXN6960881PC023	2	CAP SCREW, SOCKET HEAD .750-10UNC-2A X 3.00 LG (HARD MOUNT)	1
1A & 1B	11	AJXXXXN6960881PC047	2	CAP SCREW, SOCKET HEAD .750-10UNC-2A X 4.00 LG (HARD MOUNT)	3
1A & 1B	12	AJXXXXN6960881PC003	2	RESILIAN T MOUNT	4
1A & 1B	13	AJXXXXN6960881PC024	2	CAP SCREW, SOCKET HEAD .750-10UNC-2A X 5.50 LG (RESILIAN T MOUNT)	1
1A & 1B	14	AJXXXXN6960881PC048	2	CAP SCREW, SOCKET HEAD .750-10UNC-2A X 6.50 LG (RESILIAN T MOUNT)	3
1A & 1B	15	AJXXXXN6960881PC025	2	HEX NUT, .750-10UNC-2B	4
1A	16	AJXXXXN6960882AY099	2	CAN / GLASS SHREDDER CHAMBER ASSEMBLY	1
1B	17	AJXXXXN7556871AY099	2	MOD 1 PLASTICS SHREDDER CHAMBER ASSEMBLY	1
1A	18	AJXXXXN6960954AY099	2	MK II ELECTRICAL ENCLOSURE	1
1B	19	AJXXXXN7556872AY099	2	MOD 1 ELECTRICAL ENCLOSURE	1
1A & 1B	20	AJXXXXN6960891AY099	2	RIGHT ANGLE SPEED REDUCER	1
1A & 1B	21	AJXXXXN6960881PC052	2	CHAIN ASSEMBLY FOR SIZE B6018 CHAIN COUPLING	2
1A & 1B	22	AJXXXXN6960881PC053	2	CONNECTING LINK, DOUBLE STRAND ROLLER CHAIN, .75" PITCH	2
1A & 1B	23	AJXXXXN6960881PC058	2	CHAIN COUPLING FLANGE, B6018 SIZE, 1.75" BORE	2
1A & 1B	24	AJXXXXN6960881PC015	2	CHAIN COUPLING FLANGE, B6018 SIZE, 1.875" BORE	2
1A	25	AJXXXXN6960892PC001	2	DRIVE MOTOR, 5 H.P.	1
1B	26	AJXXXXN7556873PC020	2	DRIVE MOTOR, 7.5 H.P.	1



1A	27	AJXXXXN6960881PC017	2	KEY, .250 SQUARE X 1.50 LG	1
1B	28	AJXXXXN7556873PC022	2	KEY, .312 SQUARE X 2.00 LG	1
1A & 1B	29	AJXXXXN6960881PC018	2	KEY, .375 SQUARE X 2.00 LG	1
1A & 1B	30	AJXXXXN6960881PC019	2	KEY, .438 SQUARE X 2.25 LG	4
1A & 1B	31	AJXXXXN6960881PC051	2	KEY, .500 SQUARE X 2.25 LG	4
1A & 1B	32	AJXXXXN6960891PC013	2	QD SHEAVE, 10.62 O.D., 2 GROOVE 3V BELT, Ø1.50 SHAFT, .38 SQ KEY	1
1A	33	AJXXXXN6960881PC012	2	QD SHEAVE, 5.30 O.D., 2 GROOVE 3V BELT, Ø1.12 SHAFT, .25 SQ KEY	1
1B	34	AJXXXXN7556873PC027	2	QD SHEAVE, 5.30 O.D., 2 GROOVE 3V BELT, Ø1.38 SHAFT, .31 SQ KEY	1
1A & 1B	35	AJXXXXN6960881PC014	2	V-BELT, MULTIPLE, 2 RIBS, 3VX CROSS SECTION, 67.00 OUTSIDE LENGTH	1
1A & 1B	36	AJXXXXN6960896PC003	2	DRIVE HAZARD PLATE	1
1A & 1B	37	AJXXXXN6960896PC016	2	SPEED REDUCER OIL LEVEL PLATE	1
1B	38	AJXXXXN6960896PC024	2	PLASTICS ONLY LABEL	1
1B	39	AJXXXXN7556833PC031	2	NAMEPLATE, PLASTICS PROCESSOR	1
1A & 1B	40	AJXXXXN6960881PC055	2	CAP SCREW, HEX HEAD .250-20UNC-2A X .38 LG	4
1A	41	AJXXXXN6960881PC027	2	CAP SCREW, HEX HEAD .375-16UNC-2A X 2.00 LG	4
1B	42	AJXXXXN7556873PC036	2	CAP SCREW, HEX HEAD .375-16UNC-2A X 1.25 LG	4
1A & 1B	43	AJXXXXN6960881PC037	2	CAP SCREW, SOCKET HEAD .250-20UNC-2A X .50 LG	4
1A & 1B	44	AJXXXXN6960881PC031	2	CAP SCREW, SOCKET HEAD .375-16UNC-2A X 1.00 LG	2
1A & 1B	45	AJXXXXN6960881PC030	2	CAP SCREW, SOCKET HEAD .375-16UNC-2A X 3.00 LG	4
1A & 1B	46	AJXXXXN6960881PC046	2	CAP SCREW, HEX HEAD .375-16UNC-2A X 4.50 LG	1
1A & 1B	47	AJXXXXN6960881PC026	2	CAP SCREW, SOCKET HEAD .500-13UNC-2A X 2.00 LG	4
1A & 1B	48	AJXXXXN6960881PC026	2	CAP SCREW, SOCKET HEAD .500-13UNC-2A X 3.00 LG	6
1A & 1B	49	AJXXXXN6960881PC062	2	SPRING PIN, HEAVY DUTY ROLL TYPE, Ø.25 X 3.50 LG	2
1A & 1B	50	AJXXXXN6960881PC034	2	SPRING PIN, HEAVY DUTY ROLL TYPE, Ø.25 X 2.25 LG	2
1B	51	AJXXXXN7556873PC048	2	DRIVE SCREW, TYPE F, #6 X .25 LG	4
1A & 1B	52	AJXXXXN6960880PC042	2	HEX NUT, .375-16UNC-2B	5
1A & 1B	53	AJXXXXN6960880PC022	2	HEX NUT, .500-13UNC-2B	1
1A & 1B	54	AJXXXXN6961880PC046	2	SEALING WASHER, BONDED NEOPRENE, Ø.38 NOMINAL	2
1A & 1B	55	AJXXXXN6960880PC054	2	SET SCREW, HEX SOCKET, CUP POINT, .312-18UNC-2A X .50 LG	4
1A & 1B	56	AJXXXXN6960881PC029	2	BEVEL WASHER, Ø.500 NOMINAL	4
1A & 1B	57	AJXXXXN6960881PC063	2	FLAT WASHER, Ø.25 NOMINAL	4
1A & 1B	58	AJXXXXN6960881PC064	2	FLAT WASHER, Ø.38 NOMINAL	12
1A	59	AJXXXXN6960881PC020	2	SPACER	4
1A	60	AJXXXXN6960881PC037	2	SET SCREW, HEX SOCKET, CUP POINT, .250-20UNC-2A X .50 LG	4



1A & 1B	61	AJXXXXN6960889PC001	2	COLLECTION BIN	1
1A & 1B	62	AJXXXXN6960899PC002	2	DIFFERENTIAL AIR PRESSURE SWITCH	1
1A & 1B	63	AJXXXXN6960889PC007	2	COMPRESSION FITTING, .25 O.D. TUBE X 1/8 MALE NPT	1
1A 7 1B	64	AJXXXXN6960889PC015	2	TUBING, .25 O.D. X 5 FT LG, TYGON	1

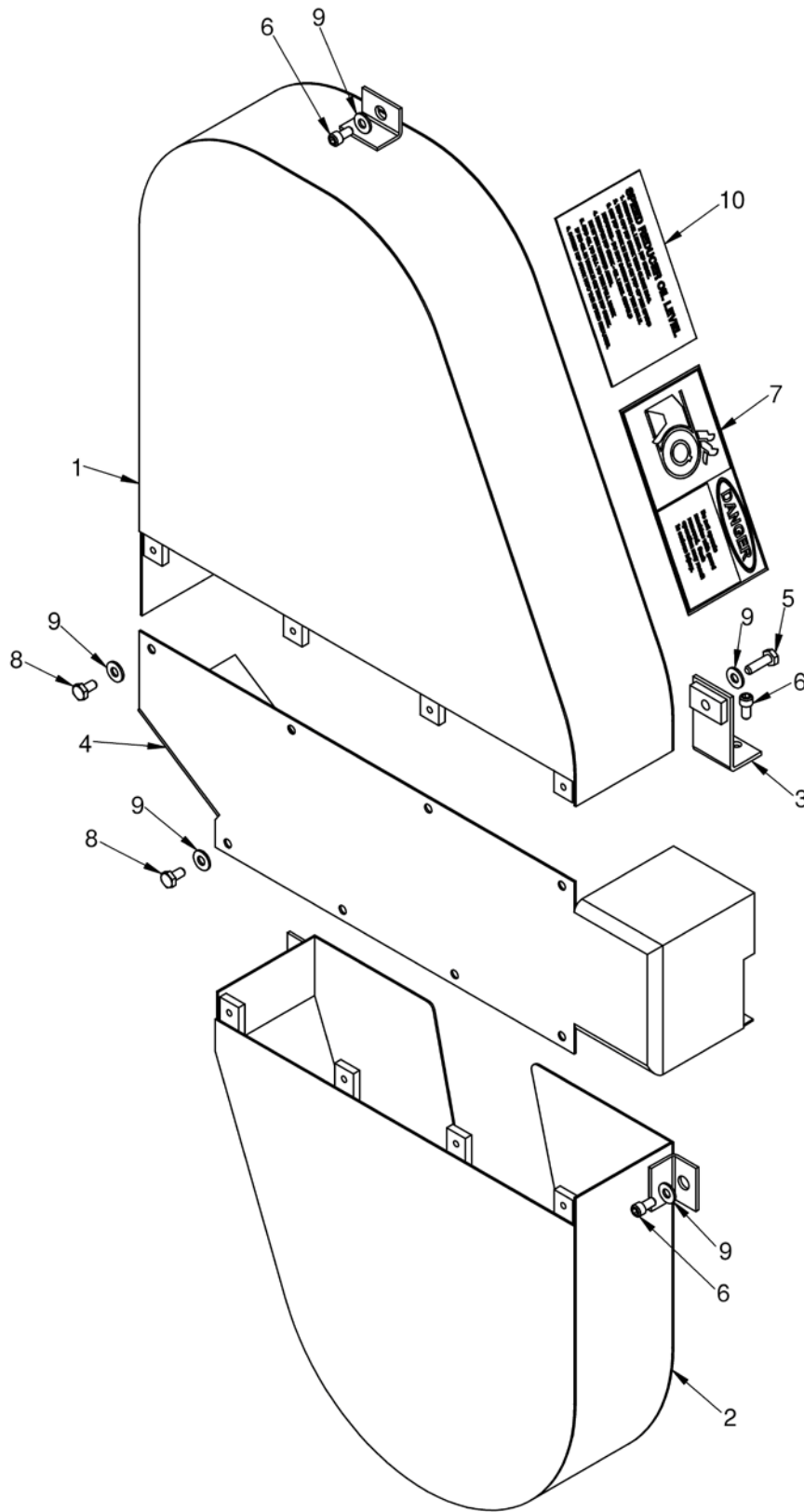


Figure 2. Belt Guard Assembly

PWP Mod. I Belt Guard Assembly

FIG. NO.	INDEX NO.	PART NUMBER	INDENT	DESCRIPTION	QTY PER ASSY
2	1	AJXXXXN6960898AY098	2	UPPER BELT GUARD WELDMENT	1
2	2	AJXXXXN6960898AY097	2	LOWER BELT GUARD WELDMENT	1
2	3	AJXXXXN6960898AY094	2	SUPPORT WELDMENT	1
2	4	AJXXXXN6960898PC005	2	MIDDLE BELT GUARD COVER	1
2	5	AJXXXXN6960898PC013	2	CAP SCREW, HEX HEAD, .250-20UNC-2A X .88 LG	1
2	6	AJXXXXN6960898PC016	2	CAP SCREW, SOCKET HEAD, .250-20UNC-2A X .50 LG	7
2	7	AJXXXXN6960896PC003	2	DRIVE HAZARD PLATE	1
2	8	AJXXXXN6960898PC019	2	CAP SCREW, HEX HEAD, .250-20UNC-2A X .50 LG	8
2	9	AJXXXXN6960898PC020	2	FLAT WASHER, Ø.250 NOMINAL	15
2	10	AJXXXXN6960896PC021	2	SPEED REDUCER OIL LEVEL PLATE	1

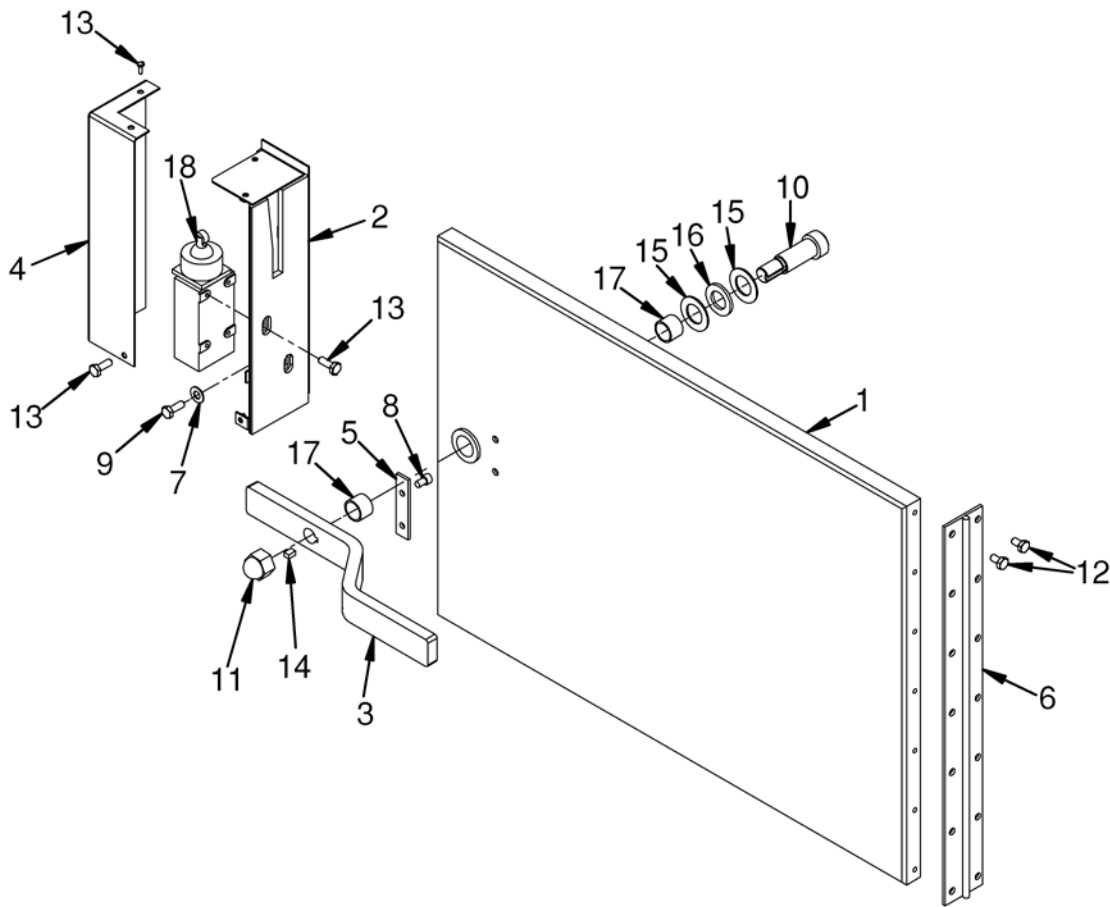


Figure 3. Collection Area Door Assembly

Collection Area Door Assembly

FIG. NO.	INDEX NO.	PART NUMBER	INDENT	DESCRIPTION	QTY PER ASSY
3	1	AJXXXXN6960887AY098	2	DOOR WELDMENT	1
3	2	AJXXXXN6960887AY097	2	LATCH WELDMENT	1
3	3	AJXXXXN6960887PC001	2	HANDLE	1
3	4	AJXXXXN6960887PC002	2	LATCH COVER	1
3	5	AJXXXXN6960887PC003	2	HANDLE STOP	1
3	6	AJXXXXN6960887PC004	2	CONTINUOUS HINGE	1
3	7	AJXXXXN6960887PC008	2	FLAT WASHER, Ø.250 NOMINAL	3
3	8	AJXXXXN6960887PC012	2	CAP SCREW, SOCKET HEAD, .250-20UNC-2A X .38 LG	2
3	9	AJXXXXN6960887PC013	2	CAP SCREW, HEX HEAD, .250-20UNC-2A X .75 LG	3
3	10	AJXXXXN6960887PC014	2	SHOULDER SCREW, Ø.75 X 1.75 LG	1
3	11	AJXXXXN6960887PC016	2	ACORN NUT, .625-11UNC-2B	1
3	12	AJXXXXN6960887PC020	2	CAP SCREW, HEX HEAD, .250-20UNC-2A X .50 LG	14
3	13	AJXXXXN6960887PC021	2	MACHINE SCREW, BUTTON HEAD, .190-32UNF-2A X .38 LG	5



3	14	AJXXXXN6960887PC022	2	KEY, .250 SQUARE X .37 LG	1
3	15	AJXXXXN6960887PC023	2	WAVE WASHER, .828 I.D. X 1.432 O.D. X .020 THK	2
3	16	AJXXXXN6960887PC024	2	SPACER	1
3	17	AJXXXXN6960887PC030	2	SLEEVE BEARING, .750 I.D. X .875 O.D. X .625 LG	2
3	18	AJXXXXN6960939PC001	2	LIMIT SWITCH, TOP ROLLER, 1 N.O., 1 N.C.	1

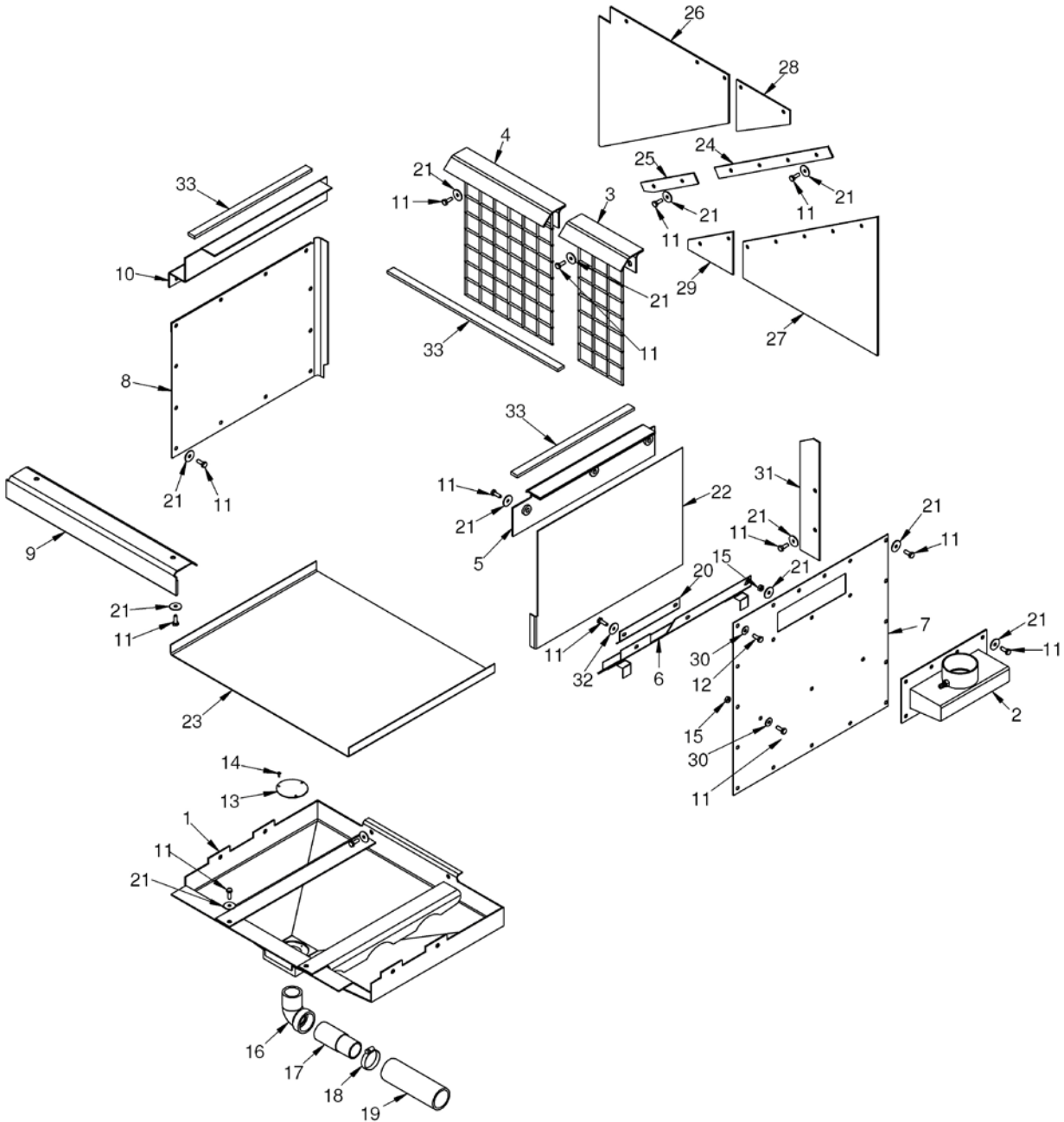


Figure 4. Collection Area Enclosure



Collection Area Enclosure

FIG. NO.	INDEX NO.	PART NUMBER	INDENT	DESCRIPTION	QTY PER ASSY
4	1	AJXXXXN6960929AY098	2	DRAIN PAN ASSEMBLY	1
4	2	AJXXXXN6960929AY097	2	VENT BOX ASSEMBLY	1
4	3	AJXXXXN6960929AY096	2	RIGHT BACK GUIDE ASSEMBLY	1
4	4	AJXXXXN6960929AY095	2	LEFT BACK GUIDE ASSEMBLY	1
4	5	AJXXXXN6960929AY094	2	RIGHT SIDE GUIDE ASSEMBLY	1
4	6	AJXXXXN6960929AY093	2	DRIP GUIDE ASSEMBLY	1
4	7	AJXXXXN6960929PC004	2	RIGHT WALL PANEL	1
4	8	AJXXXXN6960929PC005	2	LEFT WALL PANEL	1
4	9	AJXXXXN6960929PC008	2	GUIDE FRONT	1
4	10	AJXXXXN6960929PC010	2	GUIDE LEFT SIDE	1
4	11	AJXXXXN6960929PC011	2	CAP SCREW, HEX HEAD, .250-20UNC-2A X .75 LG	57
4	12	AJXXXXN6960929PC012	2	CAP SCREW, HEX HEAD, .250-20UNC-2A X .50 LG	1
4	13	AJXXXXN6960929PC016	2	PERFORATED DRAIN SCREEN	1
4	14	AJXXXXN6960929PC018	2	CAP SCREW, BUTTON HEAD, .138-32UNC-2A X .38 LG	3
4	15	AJXXXXN6960929PC019	2	HEX NUT, .250-20UNC-2B	6
4	16	AJXXXXN6960929PC020	2	STREET ELBOW, 1-1/4 NPT	1
4	17	AJXXXXN6960929PC021	2	PIPE, 1-1/4 SCH 40 X 4.00 LG	1
4	18	AJXXXXN6960929PC022	2	HOSE CLAMP, WORM DRIVE, 1.06-2.00 RANGE	1
4	19	AJXXXXN6960929PC023	2	HOSE, 1.50 I.D. X 12.00 LG	1
4	20	AJXXXXN6960929PC029	2	DRIP GUIDE FILLER	1
4	21	AJXXXXN6960929PC031	2	FENDER WASHER, Ø.250 NOMINAL	56
4	22	AJXXXXN6960929PC032	2	VENT SCREEN PLATE	1
4	23	AJXXXXN6960929PC033	2	BOTTOM SCREEN PLATE	1
4	24	AJXXXXN6960929PC036	2	PLATE, 1.00 X 15.94	1
4	25	AJXXXXN6960929PC037	2	PLATE, 1.00 X 7.44	1
4	26	AJXXXXN6960929PC038	2	BLOW OUT FLAP, 14.75 X 15.23	1
4	27	AJXXXXN6960929PC039	2	BLOW OUT FLAP, 14.12 X 15.75	1
4	28	AJXXXXN6960929PC040	2	BLOW OUT FLAP, 5.25 X 6.25	1
4	29	AJXXXXN6960929PC041	2	BLOW OUT FLAP, 4.38 X 5.25	1
4	30	AJXXXXN6960929PC045	2	FLAT WASHER, NARROW, Ø.250 NOMINAL	5
4	31	AJXXXXN6960929PC048	2	BLOW OUT BAFFLE PLATE	1
4	32	AJXXXXN6960929PC050	2	FLAT WASHER, Ø.250 NOMINAL	3
4	33	AJXXXXN6960881PC070	2	GASKET, PRESSURE SENSITIVE, .75 X .25 X 52.00 LG	1



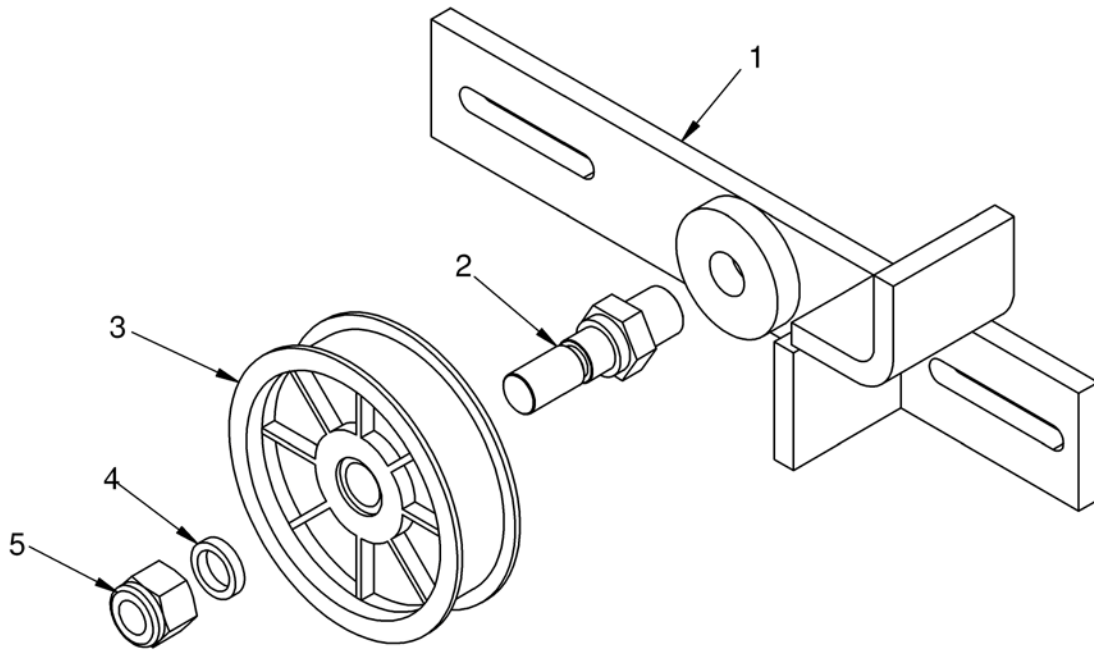


Figure 5. Drive Belt Tensioner

Drive Belt Tensioner

FIG. NO.	INDEX NO.	PART NUMBER	INDENT	DESCRIPTION	QTY PER ASSY
5	1	AJXXXXN6960894AY098	2	TENSIONER WELDMENT	1
5	2	AJXXXXN6960898PC005	2	SHAFT	1
5	3	AJXXXXN6960926PC001	2	IDLER PULLEY	1
5	4	AJXXXXN6960898PC009	2	SPACER	1
5	5	AJXXXXN6960898PC010	2	ELASTIC LOCK NUT, .625-11UNC-2B	1

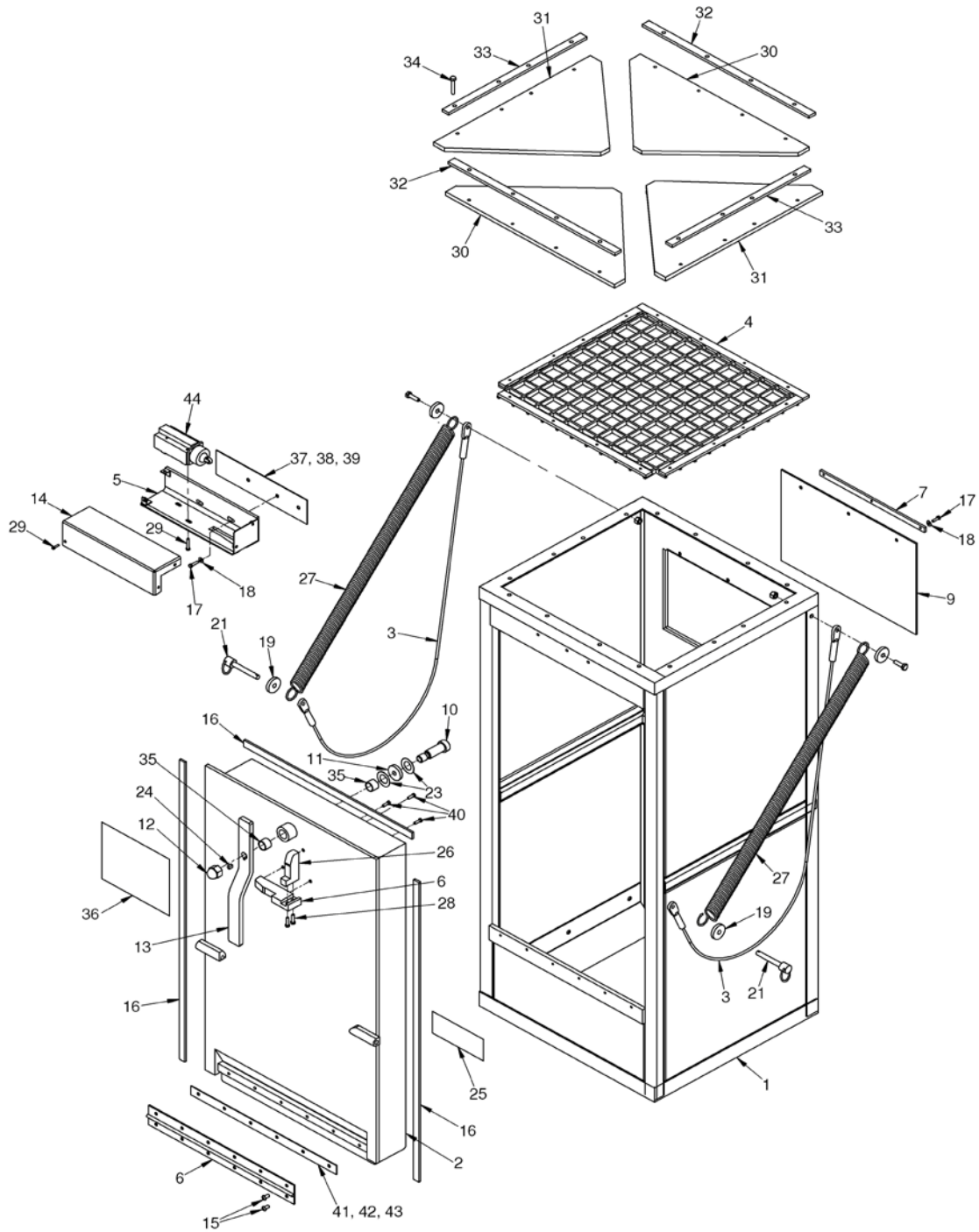


Figure 6. Feed Hopper Assembly

Feed Hopper Assembly

FIG. NO.	INDEX NO.	PART NUMBER	INDENT	DESCRIPTION	QTY PER ASSY
6	1	AJXXXXN6960928AY098	2	FEED HOPPER WELDMENT	1



6	2	AJXXXXN6960928AY097	2	SORTING TRAY WELDMENT	1
6	3	AJXXXXN6960928AY096	2	SORTING TRAY SUPPORT CABLE	2
6	4	AJXXXXN6960928AY093	2	TOP BLOW OUT PANEL SUPPORT	1
6	5	AJXXXXN6960928AY092	2	LATCH WELDMENT	1
6	6	AJXXXXN6960928PC002	2	LOWER HANDLE STOP	1
6	7	AJXXXXN6960928PC003	2	BAR, 12.00 X .19 X .50	1
6	8	AJXXXXN6960928PC006	2	CONTINUOUS HINGE	1
6	9	AJXXXXN6960928PC007	2	RUBBER SHEET, 15.50 X 9.50 X .13 THK, BLACK	1
6	10	AJXXXXN6960928PC019	2	SHOULDER SCREW, Ø.75 X 1.75 LG	1
6	11	AJXXXXN6960928PC020	2	FLAT WASHER, Ø.750	1
6	12	AJXXXXN6960928PC021	2	HEX ACORN NUT, .625-11UNC-2B	1
6	13	AJXXXXN6960928PC022	2	HANDLE, .50 THK	1
6	14	AJXXXXN6960928PC024	2	LATCH COVER	1
6	15	AJXXXXN6960928PC026	2	CAP SCREW, BUTTON HEAD .250-20UNC-2A X .50 LG	12
6	16	AJXXXXN6960928PC027	2	NEOPRENE FOAM, ADHESIVE BACK, .75 X .25 X 108.00 LG	1
6	17	AJXXXXN6960928PC028	2	CAP SCREW, HEX HEAD .250-20UNC-2A X .62 LG	6
6	18	AJXXXXN6960928PC030	2	FLAT WASHER, Ø.250	6
6	19	AJXXXXN6960928PC035	2	SPACER	4
6	20	AJXXXXN6960928PC036	2	CAP SCREW, HEX HEAD .375-16UNC-2A X 1.50 LG	2
6	21	AJXXXXN6960928PC039	2	QUICK RELEASE PIN, RING GRIP, Ø.375 X 3.50 GRIP LENGTH	2
6	22	AJXXXXN6960928PC043	2	HEX NUT, .375-16UNC-2B	2
6	23	AJXXXXN6960928PC045	2	WAVE WASHER, .828 I.D. X 1.432 O.D. X .125 FREE HEIGHT	2
6	24	AJXXXXN6960928PC046	2	KEY .250 X .188 X .37 LG	1
6	25	AJXXXXN6960896PC002	2	HAZARD PLATE	1
6	26	AJXXXXN6960928PC051	2	UPPER HANDLE STOP	1
6	27	AJXXXXN6960928PC052	2	EXTENSION SPRING	2
6	28	AJXXXXN6960928PC053	2	CAP SCREW, FLAT HEAD .250-20UNC-2A X .75 LG	2
6	29	AJXXXXN6960928PC059	2	MACHINE SCREW, SOCKET HEAD .190-32UNF-2A X .38 LG	5
6	30	AJXXXXN6960928PC060	2	TOP BLOW OUT PANEL, 10.00 X 19.37 X .13 THK	2
6	31	AJXXXXN6960928PC061	2	TOP BLOW OUT PANEL, 10.50 X 18.00 X .13 THK	2
6	32	AJXXXXN6960928PC065	2	BAR, .25 X .75 X 19.13	2
6	33	AJXXXXN6960928PC066	2	BAR, .25 X .75 X 15.88	2
6	34	AJXXXXN6960928PC067	2	CAP SCREW, HEX HEAD .250-20UNC-2A X 1.50 LG	16
6	35	AJXXXXN6960928PC071	2	SLEEVE BEARING, .750 I.D. X .875 O.D. X .625 LG	2
6	36	AJXXXXN6960896PC022	2	DAILY CLEANING INSTRUCTIONS LABEL PLATE	1
6	37	AJXXXXN6960928PC074	2	LATCH SHIM, .120 THK	AR
6	38	AJXXXXN6960928PC075	2	LATCH SHIM, .059 THK	AR
6	39	AJXXXXN6960928PC076	2	LATCH SHIM, .029 THK	AR
6	40	AJXXXXN6960928PC077	2	CAP SCREW, HEX HEAD	3



				.250-20UNC-2A X .50 LG	
6	41	AJXXXXN6960928PC078	2	HINGE SHIM, .120 THK	AR
6	42	AJXXXXN6960928PC079	2	HINGE SHIM, .058 THK	AR
6	43	AJXXXXN6960928PC080	2	HINGE SHIM, .029 THK	AR
6	44	AJXXXXN6960939PC001	2	LIMIT SWITCH, TOP ROLLER, 1 N.O., 1 N.C.	1

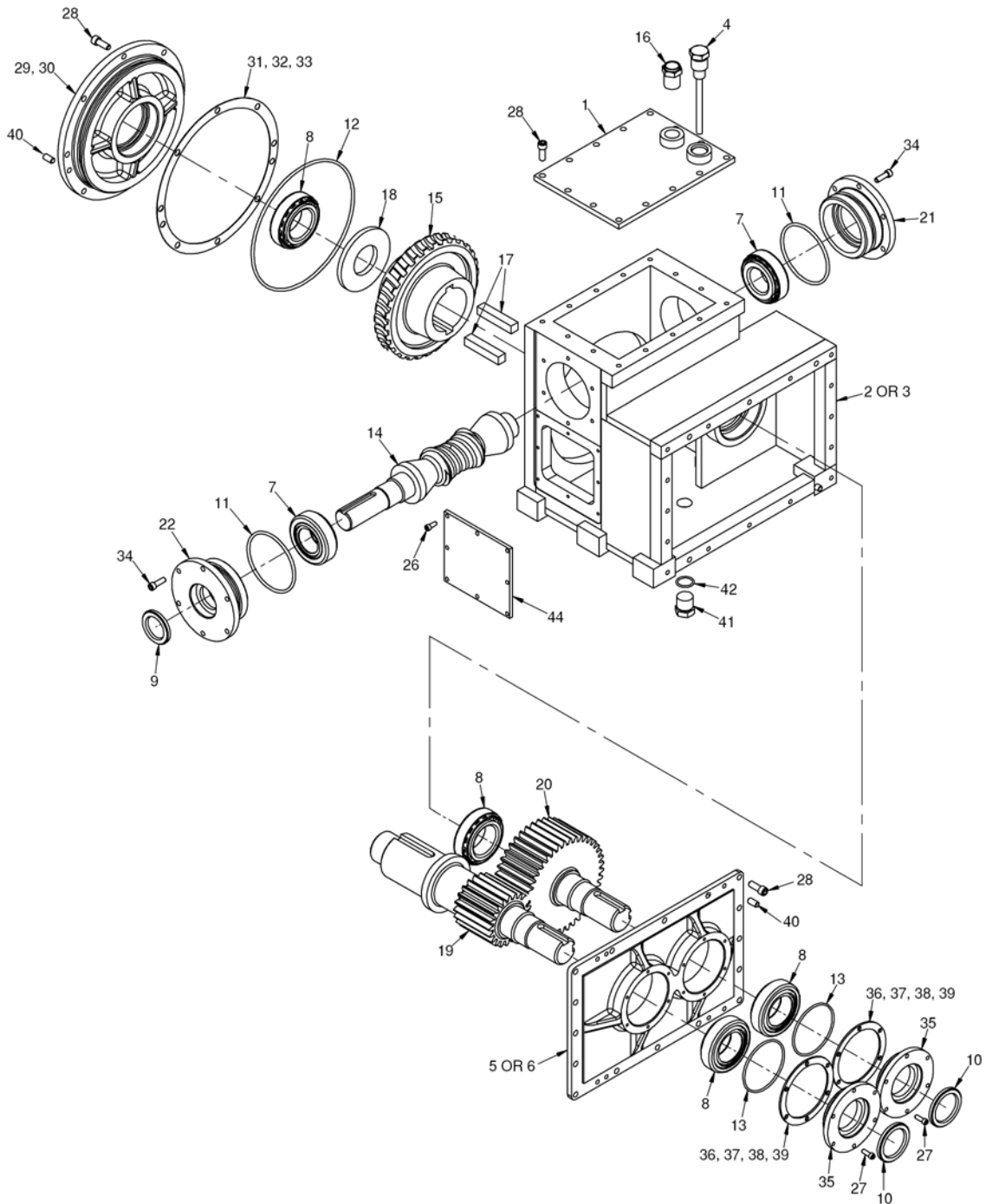


Figure 7. Speed Reducer, Right Angle

Speed Reducer, Right Angle

FIG. NO.	INDEX NO.	PART NUMBER	INDENT	DESCRIPTION	QTY PER ASSY
7	1	AJXXXXN6960891AY097	2	TOP COVER WELDMENT	1
7	2	AJXXXXN6960891AY096	2	HOUSING, WELDMENT	1
7	3	AJXXXXN6960891PC034	2	HOUSING, CASTING	1
7	4	AJXXXXN6960891AY095	2	OIL LEVEL DIP STICK	1
7	5	AJXXXXN6960891AY094	2	END COVER, WELDMENT	1
7	6	AJXXXXN6960891PC029	2	END COVER, CAST	1
7	7	AJXXXXN6960891PC001	2	TAPERED ROLLER BEARING, TYPE TS, CUP HM803110, CONE HM803149 (TIMKIN)	2
7	8	AJXXXXN6960891PC002	2	TAPERED ROLLER BEARING, TYPE TS, CUP 88321, CONE 33895 (TIMKIN)	4
7	9	AJXXXXN6960891PC003	2	OIL SEAL, TYPE CRWA1, CHICAGO RAWHIDE 15549	1
7	10	AJXXXXN6960891PC004	2	OIL SEAL, TYPE CRWA1, CHICAGO RAWHIDE 19839	2
7	11	AJXXXXN6960891PC005	2	O-RING, SIZE 1-345, FLUOROCARBON	2
7	12	AJXXXXN6960891PC006	2	O-RING, SIZE 1-373, FLUOROCARBON	1
7	13	AJXXXXN6960891PC007	2	O-RING, SIZE 1-238, FLUOROCARBON	2
7	14	AJXXXXN6960891PC008	2	WORM GEAR, SINGLE EXTENDED, CONE DRIVE 50-200-15	1
7	15	AJXXXXN6960891PC009	2	CONE GEAR, STANDARD HUB, CONE DRIVE 50-300-15	1
7	16	AJXXXXN6960891PC010	2	VENT PLUG WITH FILTER AND DEFLECTOR	1
7	17	AJXXXXN6960891PC011	2	KEY, .625 SQUARE X 3.12 LG	2
7	18	AJXXXXN6960891PC012	2	BEARING SPACER	1
7	19	AJXXXXN6960891PC013	2	INTERMEDIATE PINION SHAFT	1
7	20	AJXXXXN6960891PC014	2	LOW SPEED GEAR SHAFT	1
7	21	AJXXXXN6960891PC015	2	WORM END CAP, NON-DRIVE SIDE	1
7	22	AJXXXXN6960891PC016	2	WORM END CAP, DRIVE SIDE	1
7	23	AJXXXXN6960891PC017	2	SHIM, .005 THK	6
7	24	AJXXXXN6960891PC018	2	SHIM, .007 THK	6
7	25	AJXXXXN6960891PC019	2	SHIM, .020 THK	2
7	26	AJXXXXN6960891PC020	2	CAP SCREW, SOCKET HEAD .250-20UNC-2A X .62 LG	8
7	27	AJXXXXN6960891PC021	2	CAP SCREW, SOCKET HEAD .250-20UNC-2A X .75 LG	12
7	28	AJXXXXN6960891PC022	2	CAP SCREW, SOCKET HEAD .375-16UNC-2A X 1.00 LG	38
7	29	AJXXXXN6960891PC024	2	WORM GEAR END CAP, CASTING	1
7	30	AJXXXXN6960891PC063	2	WORM GEAR END CAP, MACHINED	1
7	31	AJXXXXN6960891PC025	2	SHIM, .005 THK	3
7	32	AJXXXXN6960891PC026	2	SHIM, .007 THK	3
7	33	AJXXXXN6960891PC027	2	SHIM, .020 THK	1
7	34	AJXXXXN6960891PC028	2	CAP SCREW, SOCKET HEAD	18



				.312-18UNC-2A X 1.00 LG	
7	35	AJXXXXN6960891PC030	2	SPUR GEAR END CAP	2
7	36	AJXXXXN6960891PC031	2	SHIM, .005 THK	6
7	37	AJXXXXN6960891PC032	2	SHIM, .007 THK	6
7	38	AJXXXXN6960891PC033	2	SHIM, .020 THK	2
7	39	AJXXXXN6960891PC036	2	SHIM, .025 THK	4
7	40	AJXXXXN6960891PC035	2	DOWEL PIN, Ø.375 X .75 LG	6
7	41	AJXXXXN6960891PC048	2	PLUG, HEX HEAD, STRAIGHT THREAD O-RING, .75 O.D. TUBE FITTING	1
7	42	AJXXXXN6960891PC049	2	O-RING, #3-912	1
7	43	AJXXXXN6960891PC051	2	PLATE	1

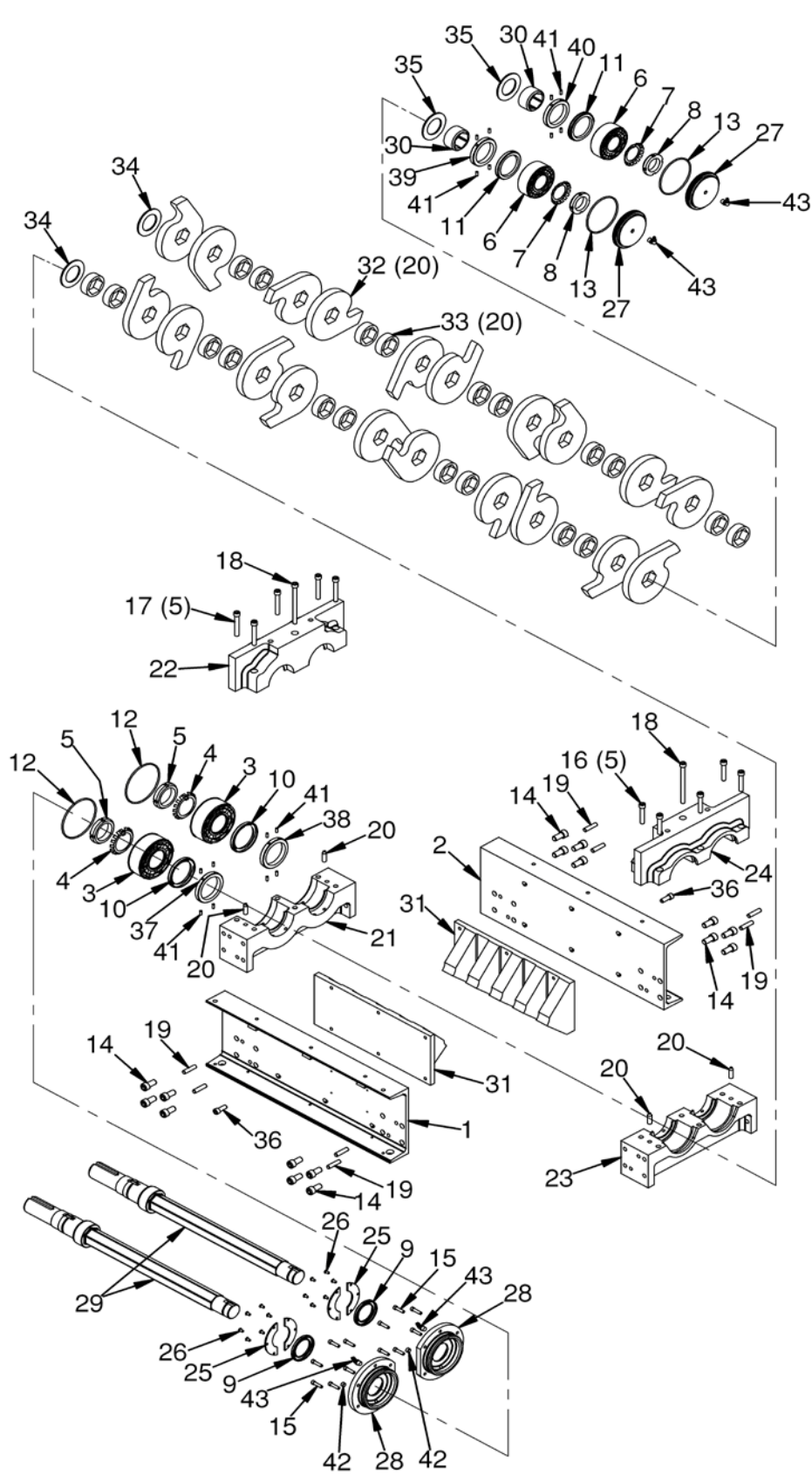


Figure 8A. Can / Glass Shredder Chamber Assembly



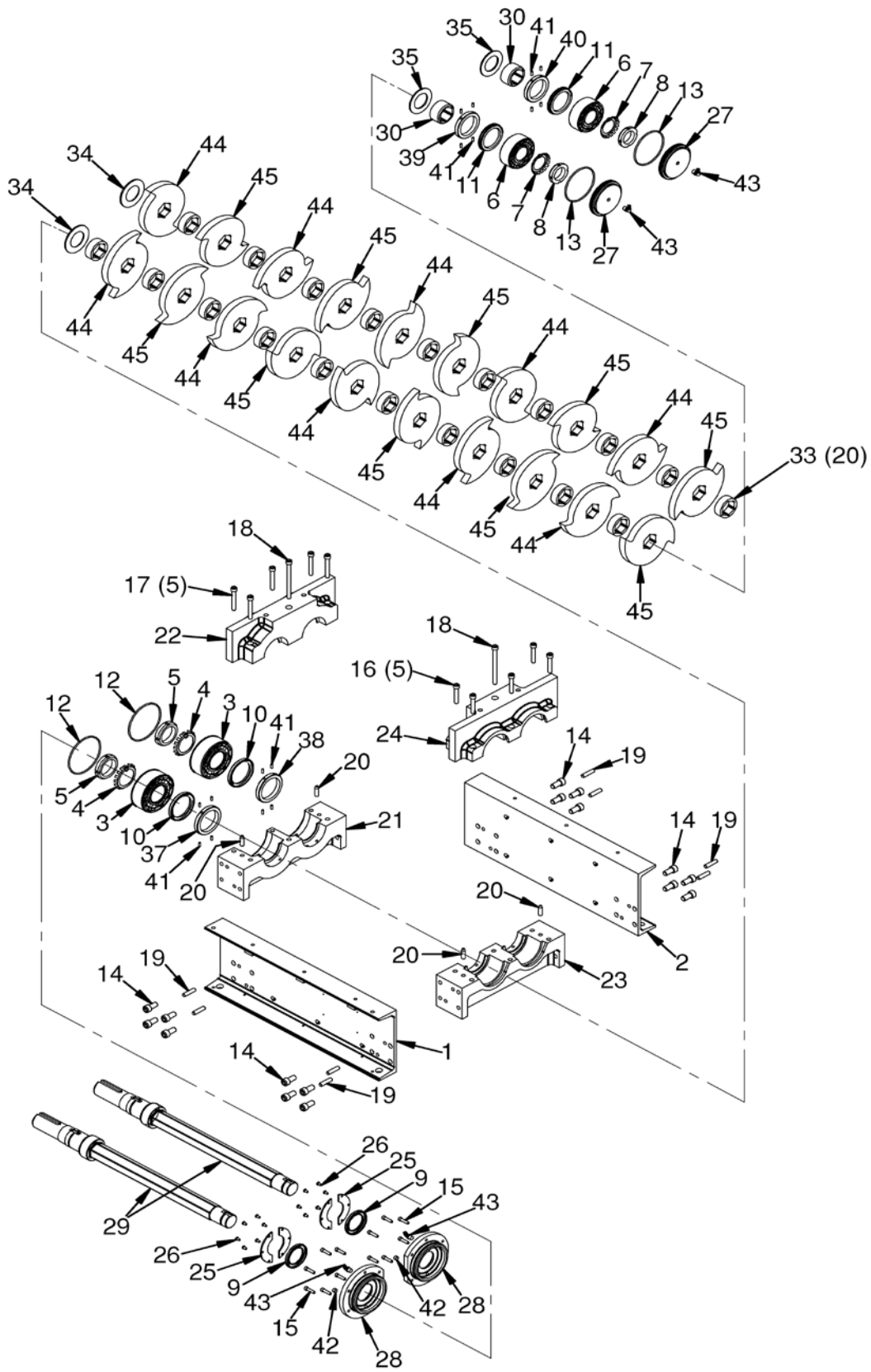


Figure 8B. Mod 1 Plastics Chamber Assembly

Can / Glass Shredder Chamber & Mod 1 Plastics Chamber Assemblies

FIG. NO.	INDEX NO.	PART NUMBER	INDENT	DESCRIPTION	QTY PER ASSY
8A & 8B	1	AJXXXXN6960882AY097	2	FRAME WELDMENT, FRONT	1
8A & 8B	2	AJXXXXN6960882AY096	2	FRAME WELDMENT, REAR	1
8A & 8B	3	AJXXXXN6960882PC001	2	SPHERICAL ROLLER BEARING, DOUBLE ROW, (22310/4)	2
8A & 8B	4	AJXXXXN6960882PC002	2	LOCKWASHER, W10	2
8A & 8B	5	AJXXXXN6960882PC003	2	LOCKNUT, N10	2
8A & 8B	6	AJXXXXN6960882PC004	2	SPHERICAL ROLLER BEARING, DOUBLE ROW, (22308/4)	2
8A & 8B	7	AJXXXXN6960882PC005	2	LOCKWASHER, W10	2
8A & 8B	8	AJXXXXN6960882PC006	2	LOCKNUT, N10	2
8A & 8B	9	AJXXXXN6960882PC007	2	OIL SEAL, TYPE CRW1 (18657)	2
8A & 8B	10	AJXXXXN6960882PC008	2	OIL SEAL, TYPE CRW1 (24897)	2
8A & 8B	11	AJXXXXN6960882PC009	2	OIL SEAL, TYPE CRW1 (22353)	2
8A & 8B	12	AJXXXXN6960882PC010	2	O-RING, 70 DUROMETER, AS568A-243	2
8A & 8B	13	AJXXXXN6960882PC011	2	O-RING, 70 DUROMETER, AS568A-240	2
8A & 8B	14	AJXXXXN6960882PC012	2	CAP SCREW, SOCKET HEAD, .500-13UNC-2A X 1.00 LG	16
8A & 8B	15	AJXXXXN6960882PC013	2	CAP SCREW, SOCKET HEAD, .250-20-2A X 1.00 LG	12
8A & 8B	16	AJXXXXN6960882PC014	2	CAP SCREW, SOCKET HEAD, .375-16UNC-2A X 2.00 LG	5
8A & 8B	17	AJXXXXN6960882PC015	2	CAP SCREW, SOCKET HEAD, .375-16UNC-2A X 2.50 LG	5
8A & 8B	18	AJXXXXN6960882PC016	2	CAP SCREW, SOCKET HEAD, .375-16UNC-2A X 4.50 LG	2
8A & 8B	19	AJXXXXN6960882PC018	2	DOWEL PIN, Ø.375 X 1.50 LG	8
8A & 8B	20	AJXXXXN6960882PC019	2	DOWEL PIN, Ø.375 X 1.25 LG	8
8A & 8B	21	AJXXXXN6960882PC020	2	LOWER BEARING HOUSING, DRIVE END	1
8A & 8B	22	AJXXXXN6960882PC021	2	UPPER BEARING HOUSING, DRIVE END	1
8A & 8B	23	AJXXXXN6960882PC022	2	LOWER BEARING HOUSING, IDLER END	1
8A & 8B	24	AJXXXXN6960882PC023	2	UPPER BEARING HOUSING, IDLER END	1
8A & 8B	25	AJXXXXN6960882PC024	2	SEAL RETAINER	4
8A & 8B	26	AJXXXXN6960882PC025	2	CAP SCREW, BUTTON HEAD, .190-32UNF-2A X .38 LG	12
8A & 8B	27	AJXXXXN6960882PC028	2	PLATE, GREASE RETAINER	2
8A & 8B	28	AJXXXXN6960882PC029	2	PLATE, SEAL CARRIER	2
8A & 8B	29	AJXXXXN6960883PC001	2	CUTTER SHAFT	2
8A & 8B	30	AJXXXXN6960883PC004	2	BEARING SPACER	2
8A	31	AJXXXXN6960884PC001	2	COMB	2
8A	32	AJXXXXN6960883PC002	2	CUTTER	20
8A & 8B	33	AJXXXXN6960883PC003	2	SPACER	20



8A & 8B	34	AJXXXXN6960883PC005	2	SEAL SHIELD, DRIVE END	2
8A & 8B	35	AJXXXXN6960883PC006	2	SEAL SHIELD, IDLER END	2
8A	36	AJXXXXN6960882PC044	2	CAP SCREW, SOCKET HEAD, .375-16UNC-2A X 1.00 LG	12
8A & 8B	37	AJXXXXN6960883PC007	2	HIGH SPEED SHAFT SEAL, DRIVE END	1
8A & 8B	38	AJXXXXN6960883PC008	2	LOW SPEED SHAFT SEAL, DRIVE END	1
8A & 8B	39	AJXXXXN6960883PC009	2	HIGH SPEED SHAFT SEAL, IDLER END	1
8A & 8B	40	AJXXXXN6960883PC010	2	LOW SPEED SHAFT SEAL, IDLER END	1
8A & 8B	41	AJXXXXN6960882PC050	2	DOWEL PIN, Ø.188 X .50 LG	16
8A & 8B	42	AJXXXXN6960882PC051	2	PIPE PLUG, HEX SOCKET, 1/8 NPT	2
8A & 8B	43	AJXXXXN6960882PC052	2	LUBRICATION FITTING, 90°, 1/8 NPT	4
8B	44	AJXXXXN7556870PC001	2	CUTTER, 2 HOOK, 0° OFFSET	10
8B	45	AJXXXXN7556870PC002	2	CUTTER, 2 HOOK, 30° OFFSET	10

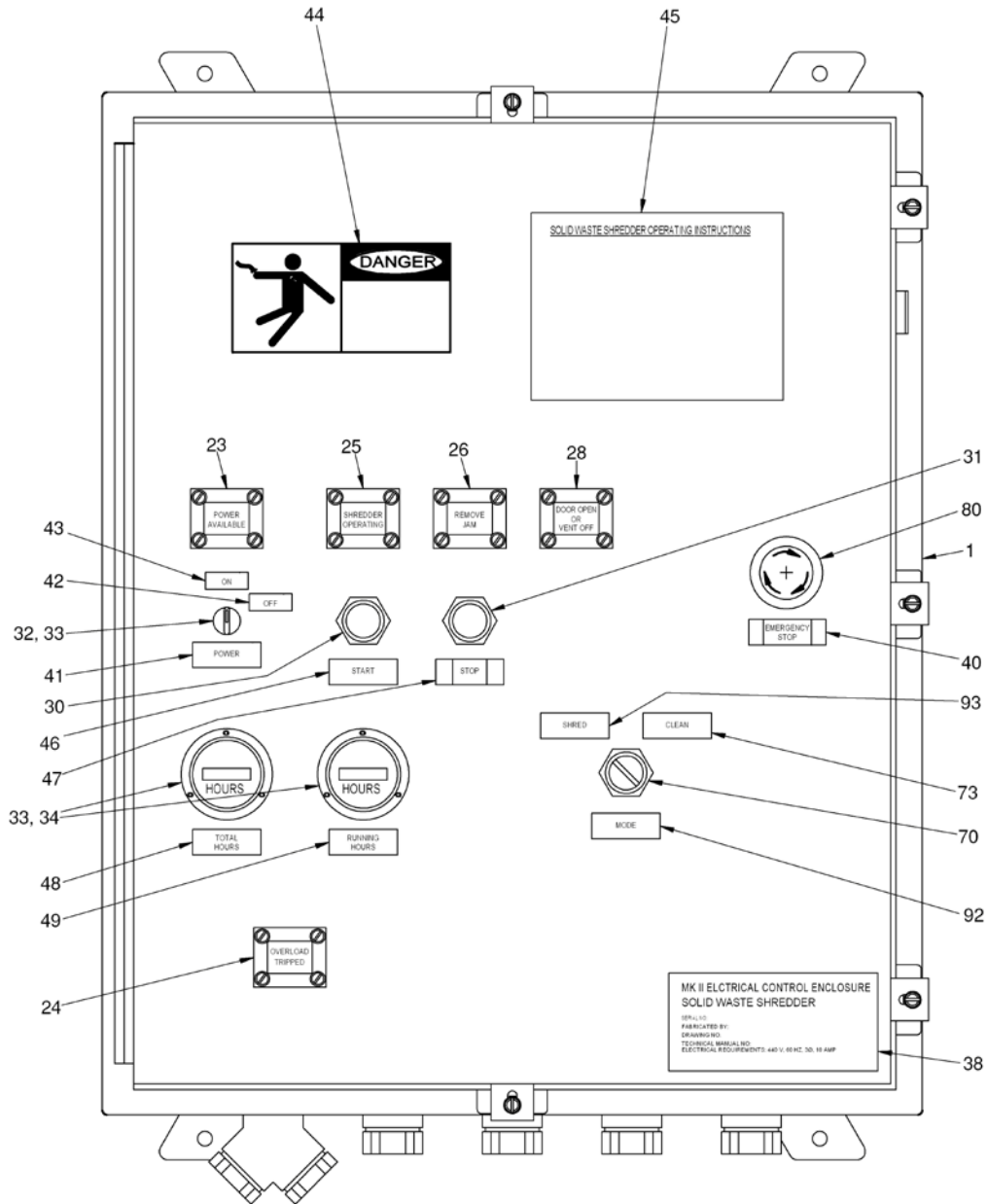


Figure 9A. Mk II Control Enclosure, PLC Arrangement (Sheet 1 of 2)

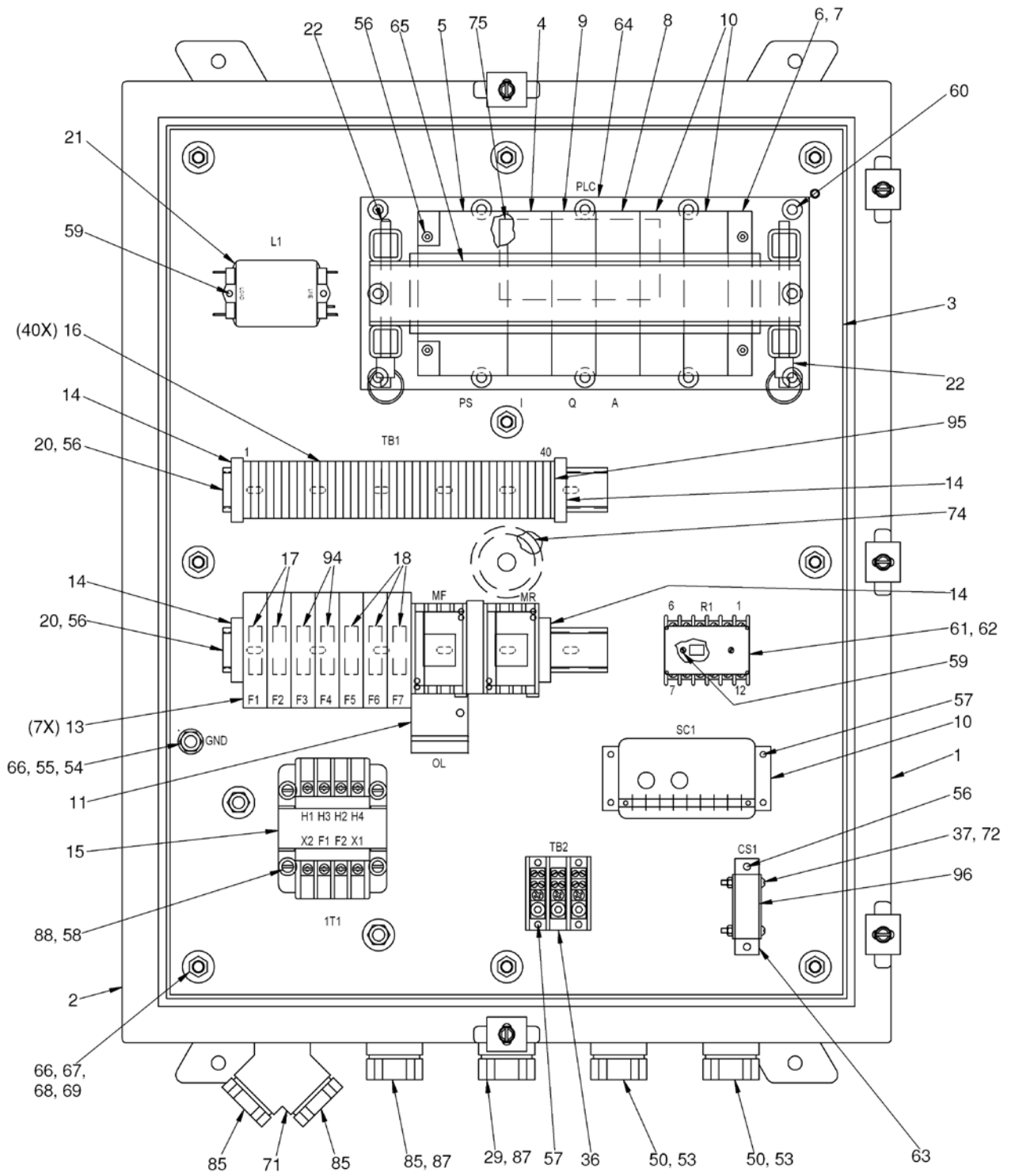


Figure 9A. Mk II Control Enclosure, PLC Arrangement (Sheet 2 of 2)

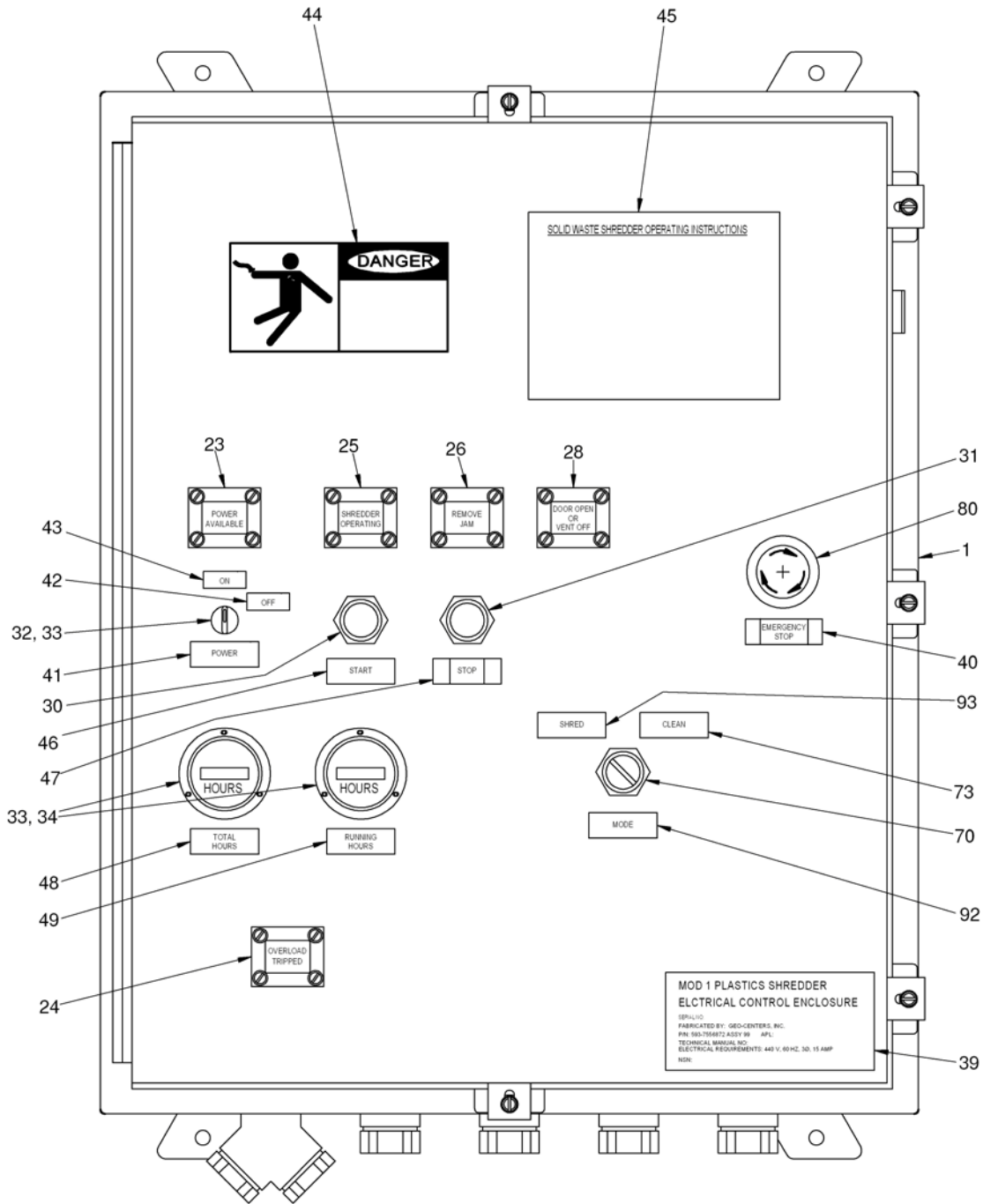


Figure 9B. Mod 1 Control Enclosure, PLC Arrangement (Sheet 1 of 2)

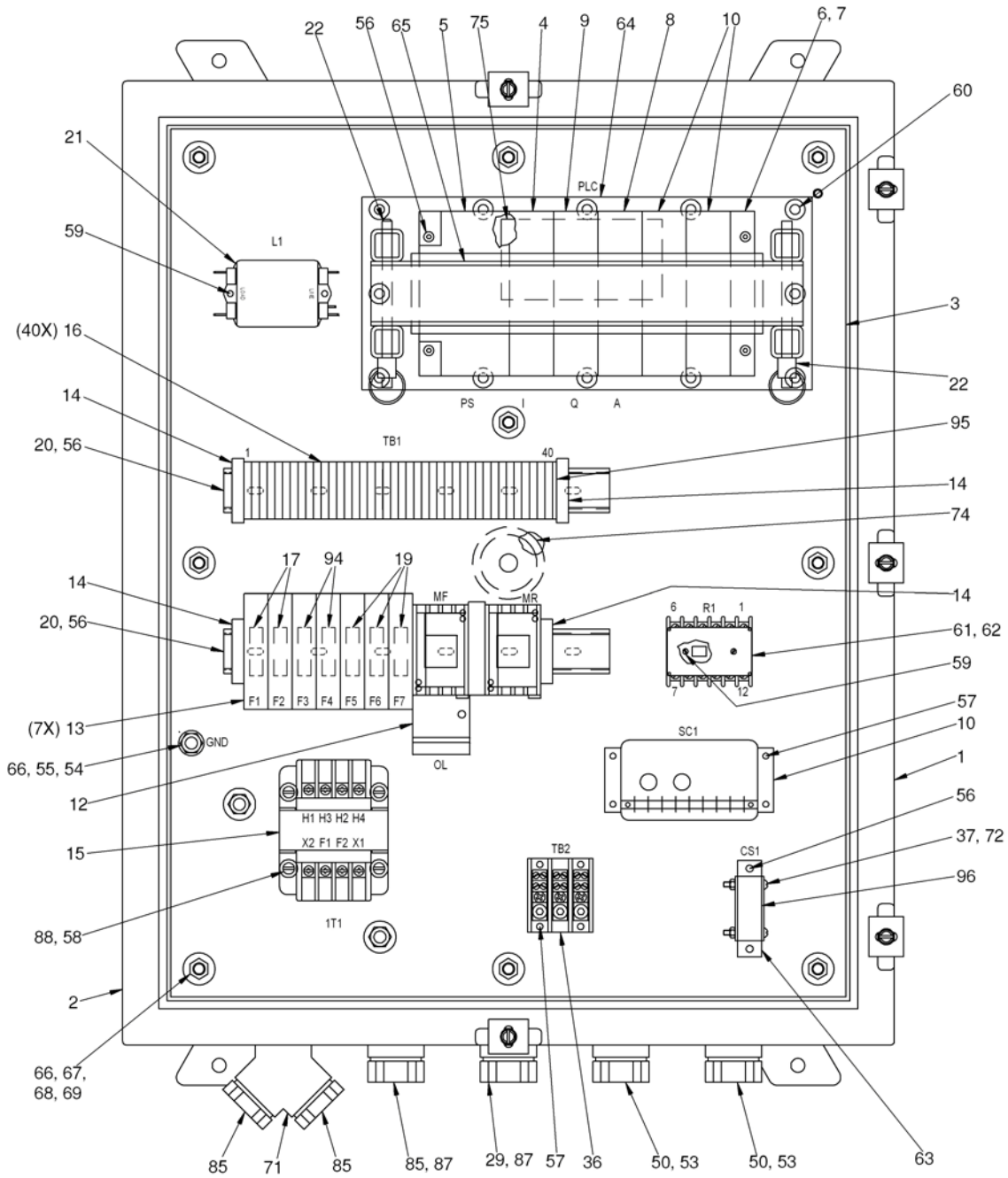


Figure 9B. Mod 1 Control Enclosure, PLC Arrangement (Sheet 2 of 2)

Mk II Control Enclosure & Mod 1 Electrical Enclosure Assemblies

FIG. NO.	INDEX NO.	PART NUMBER	INDENT	DESCRIPTION	QTY PER ASSY
----------	-----------	-------------	--------	-------------	--------------



9A & 9B	1	AJXXXXN6960954AY098	2	SIGNAL CONDITIONER AND CURRECNT TRANSDUCER ASSY	1
9A & 9B	2	AJXXXXN6960954PC001	2	CONTROL ENCLOSURE	1
9A & 9B	3	AJXXXXN6960954PC002	2	PANEL	1
9A & 9B	4	AJXXXXN6960912PC001	2	PLC INPUT MODULE	1
9A & 9B	5	AJXXXXN6960911PC001	2	PLC POWER SUPPLY	1
9A & 9B	6	AJXXXXN6960910PC001	2	PLC BACKPLANE	1
9A & 9B	7	AJXXXXN6960940PC001	2	PROM, INTEGRATED CIRCUIT, 28 PIN	1
9A & 9B	8	AJXXXXN6960914PC001	2	PLC ANALOG INPUT MODULE	1
9A & 9B	9	AJXXXXN6960913PC001	2	PLC OUTPUT MODULE	1
9A & 9B	10	AJXXXXN6960927PC001	2	PLC FILLER MODULE	2
9A	11	AJXXXXN6960954PC011	2	IEC REVERSING STARTER, AC3 RATED FOR 16A MIN	1
9B	12	AJXXXXN7556872PC011	2	IEC REVERSING STARTER, AC3 RATED FOR 7A MIN	1
9A & 9B	13	AJXXXXN6960954PC012	2	FUSE BLOCK, DIN RAIL	7
9A & 9B	14	AJXXXXN6960954PC013	2	END ANCHOR, DIN RAIL	4
9A & 9B	15	AJXXXXN6960954PC014	2	TRANSFORMER, 440 / 110 VAC, 75 VA	1
9A & 9B	16	AJXXXXN6960954PC015	2	TERMINAL BLOCK, SINGLE CIRCUIT, DIN RAIL MOUNT	40
9A & 9B	17	AJXXXXN6960954PC016	2	FUSE, MIDGET SERIES KLDR, TIME DELAY, 600 V, .3 A, Ø.41 X 1.5 LG	2
9A	18	AJXXXXN6960954PC017	2	FUSE, CLASS CC, TIME DELAY, 600 V, 15 A	3
9B	19	AJXXXXN7556872PC017	2	FUSE, CLASS CC, TIME DELAY, 600 V, 15 A	3
9A & 9B	20	AJXXXXN6960954PC019	2	DIN RAIL, SYMMETRICAL, 35mm X 7.5mm X 12.00 LG	2
9A & 9B	21	AJXXXXN6960906PC001	2	AC POWER LINE FILTER	1
9A & 9B	22	AJXXXXN6960954PC021	2	QUICK RELEASE PIN, PUSHBUTTON, Ø.312 X 4.25 GRIP	2
9A & 9B	23	AJXXXXN6960916PC001	2	INDICATOR, POWER AVAILABLE	1
9A & 9B	24	AJXXXXN6960904PC001	2	INDICATOR, OVERLOAD TRIPPED	1
9A & 9B	25	AJXXXXN6960917PC001	2	INDICATOR, SHREDDER OPERATING	1
9A & 9B	26	AJXXXXN6960918PC001	2	INDICATOR, REMOVE JAM	1
9A & 9B	27	AJXXXXN6960954PC026	2	HOOK UP WIRE, 20 AWG, RED INSULATION, 250 FT	1
9A & 9B	28	AJXXXXN6960919PC001	2	INDICATOR, DOOR OPEN OR VENT OFF	1
9A & 9B	29	AJXXXXN6960954PC028	2	PLUG, SIZE 2	1
9A & 9B	30	AJXXXXN6960932PC001	2	PUSHBUTTON, 2 N.O., GREEN	1
9A & 9B	31	AJXXXXN6960933PC001	2	PUSHBUTTON, EXTENDED HEAD, 2 N.C., RED	1
9A & 9B	32	AJXXXXN6960954PC032	2	SELECTOR SWITCH, 2 POSITION MAINTAINED, 90° SWITCHING ANGLE, 2 N.C.	1
9A & 9B	33	AJXXXXN6960954PC033	2	CONTACT BLOCK, 2 N.C.	1
9A & 9B	34	AJXXXXN6960954PC034	2	HOUR METER, 120 VAC, 60 HZ	2
9A & 9B	35	AJXXXXN6960954PC035	2	HOUR METER GASKET	2
9A & 9B	36	AJXXXXN6960954PC036	2	POWER DISTRIBUTION BLOCK	1



9A & 9B	37	AJXXXXN6960954PC037	2	HEX NUT, ELASTIC LOCKING .164-32UNC-2B	2
9A	38	AJXXXXN6960896PC025	2	NAMEPLATE, MK II ELECTRICAL CONTROL ENCLOSURE	1
9B	39	AJXXXXN7556833PC032	2	NAMEPLATE, MOD 1 ELECTRICAL CONTROL ENCLOSURE	1
9A & 9B	40	AJXXXXN6960896PC012	2	NAMEPLATE, EMERGENCY STOP	1
9A & 9B	41	AJXXXXN6960896PC011	2	NAMEPLATE, POWER	1
9A & 9B	42	AJXXXXN6960896PC008	2	NAMEPLATE, OFF	1
9A & 9B	43	AJXXXXN6960896PC007	2	NAMEPLATE, ON	1
9A & 9B	44	AJXXXXN6960896PC001	2	DANGER LABEL	1
9A & 9B	45	AJXXXXN6960896PC006	2	NAMEPLATE, OPERATING INSTRUCTION	1
9A & 9B	46	AJXXXXN6960896PC010	2	NAMEPLATE, START	1
9A & 9B	47	AJXXXXN6960896PC009	2	NAMEPLATE, STOP	1
9A & 9B	48	AJXXXXN6960896PC014	2	NAMEPLATE, TOTAL HOURS	1
9A & 9B	49	AJXXXXN6960896PC015	2	NAMEPLATE, RUNNING HOURS	1
9A & 9B	50	AJXXXXN6960954PC049	2	STUFFING TUBE, SIZE 4T, STRAIGHT	2
9A & 9B	51	AJXXXXN6960954PC050	2	MACHINE SCREW, ROUND HEAD, .112-40UNC-2A X .62 LG	6
9A & 9B	52	AJXXXXN6960954PC051	2	HEX NUT, ELASTIC LOCKING .112-40UNC-2B	6
9A & 9B	53	AJXXXXN6960954PC052	2	PACKING ASSEMBLY, SIZE 4C	2
9A & 9B	54	AJXXXXN6960954PC053	2	HEX NUT WITH EXTERNAL TOOTH LOCK WASHER, .375-16UNC-2B	1
9A & 9B	55	AJXXXXN6960954PC054	2	STUD, 375-16UNC-2A X 2.00 LG, FULLY THREADED	1
9A & 9B	56	AJXXXXN6960954PC055	2	MACHINE SCREW, ROUND HEAD, .190-32UNF-2A X .75 LG	22
9A & 9B	57	AJXXXXN6960954PC056	2	MACHINE SCREW, ROUND HEAD, .164-32UNC-2A X .75 LG	4
9A & 9B	58	AJXXXXN6960954PC057	2	MACHINE SCREW, ROUND HEAD, .190-32UNF-2A X .50 LG	4
9A & 9B	59	AJXXXXN6960954PC058	2	MACHINE SCREW, ROUND HEAD, .138-32UNC-2A X .75 LG	4
9A & 9B	60	AJXXXXN6960954PC059	2	CAP SCREW, SOCKET FLAT HEAD, .312-18UNC-2A X .62 LG	12
9A & 9B	61	AJXXXXN6960922PC001	2	RELAY, DPDT & 1 N.O., 1 N.C.	1
9A & 9B	62	AJXXXXN6960925PC001	2	RELAY SOCKET, 12 PIN, BOTTOM MOUNTED	1
9A & 9B	63	AJXXXXN6960954PC062	2	BRACKET, TRANSDUCER	1
9A & 9B	64	AJXXXXN6960954PC063	2	PLC FRAME BRACKET	1
9A & 9B	65	AJXXXXN6960954PC064	2	HOLDOWN BRACKET	1
9A & 9B	66	AJXXXXN6960954PC067	2	HEX NUT, ELASTIC LOCKING .375-16UNC-2B	13
9A & 9B	67	AJXXXXN6960954PC068	2	WASHER, Ø.375, TYPE B PLAIN	11
9A & 9B	68	AJXXXXN6960954PC069	2	CAP SCREW, HEX HEAD, .375-16UNC-2A X 2.00 LG	11
9A & 9B	69	AJXXXXN6960954PC071	2	SPACER, TUBE	11
9A & 9B	70	AJXXXXN6960937PC001	2	SELECTOR SWITCH, 2 POSITION, MAINTAIN POSITION, 2 N.O., 2 N.C.	1
9A & 9B	71	AJXXXXN6960954PC076	2	STUFFING TUBE, SIZE 2, "Y" TYPE	1



9A & 9B	72	AJXXXXN6960954PC077	2	MACHINE SCREW, ROUND HEAD, .164-32UNC-2A X 1.25 LG	2
9A & 9B	73	AJXXXXN6960896PC020	2	NAMEPLATE, CLEAN	1
9A & 9B	74	AJXXXXN6960954PC079	2	O-RING, AS568A-320, NITRILE, 65-70 DUROMETER	1
9A & 9B	75	AJXXXXN6960954PC080	2	CLOSED CELL FOAM, 2.5 X 11.0 X .25, ADHESIVE BACK	1
9A & 9B	76	AJXXXXN6960954PC082	2	CABLE TIE, 7.0 X .18	AR
9A & 9B	77	AJXXXXN6960954PC083	2	WIRE, HOOKUP, 10AWG, BLK INSL	2 FT
9A & 9B	78	AJXXXXN6960954PC084	2	WIRE, HOOKUP, 10AWG, WHT INSL	300 FT
9A & 9B	79	AJXXXXN6960954PC086	2	TERMINAL, RING TONGUE, INSULATED 10AWG, Ø.38 STUD	AR
9A & 9B	80	AJXXXXN6960938PC001	2	PUSHBUTTON, E-STOP, JUMBO MUSHROOM HEAD, 2 N.C., RED, PUSH-PULL	1
9A & 9B	81	AJXXXXN6960954PC088	2	TERMINAL, RING TONGUE, INSULATED 22-18 AWG, #8 STUD	AR
9A & 9B	82	AJXXXXN6960954PC089	2	MARKER SLEEVES, HEAT SHRINKABLE, WHITE, .188 I.D. X 1.5 LG, 2/1 SHRINK RATIO	AR
9A & 9B	83	AJXXXXN6960954PC091	2	CABLE TIE BASE, 1.00 SQUARE	AR
9A & 9B	84	AJXXXXN6960954PC092	2	SPIRAL WRAP, .25 O.D. X 32.00 LG	1
9A & 9B	85	AJXXXXN6960954PC093	2	PACKING ASSEMBLY, SIZE 2C	3
9A & 9B	86	AJXXXXN6960954PC094	2	MARKER SLEEVES, HEAT SHRINKABLE, WHITE, .250 I.D. X 1.5 LG, 2/1 SHRINK RATIO	AR
9A & 9B	87	AJXXXXN6960954PC095	2	STUFFING TUBE, SIZE 2, STRAIGHT	2
9A & 9B	88	AJXXXXN6960954PC096	2	WASHER, Ø.190	4
9A & 9B	89	AJXXXXN6960954PC097	2	TERMINAL, RING TONGUE, INSULATED 16-14 AWG, #6 STUD	AR
9A & 9B	90	AJXXXXN6960954PC098	2	CABLE TIE, 5.0 X .14	AR
9A & 9B	91	AJXXXXN6960954PC099	2	TERMINAL, FEMALE DISCONNECT, INSULATED 16-14 AWG, .25 X .032 TAB SIZE	AR
9A & 9B	92	AJXXXXN6960896PC018	2	NAMEPLATE, MODE	1
9A & 9B	93	AJXXXXN6960896PC019	2	NAMEPLATE, SHRED	1
9A & 9B	94	AJXXXXN6960954PC103	2	FUSE, MIDGET SERIES FLM, TIME DELAY, 250 V, 1 A, Ø.41 X 1.5 LG	2
9A & 9B	95	AJXXXXN6960954PC104	2	END BARRIER, DIN RAIL	1
9A & 9B	96	AJXXXXN6960908PC001	2	HALL EFFECT CURRENT TRANSDUCER	1

